

Pig Spa Day

2024 MVMA WINTER MEETING
 ROBERT J CALLAN, DVM, MS, PHD, DACVIM
 RETIRED PROFESSOR EMERITUS
 COLORADO STATE UNIVERSITY
 RCALLAN@COLOSTATE.EDU



1

What is a Pig Spa Day?

- Once or Twice a year
- Body Weight and Body Condition Score
- Health Exam
- Bloodwork
- Skin Evaluation
- Ear Exam and Cleaning
- Eye Exam and Cleaning
- Hoof Trim
- Dental Exam
- Vaccinations
- Review Medications



2

Initial Exam

Held off feed and water the night before



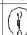
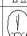
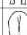
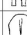
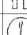
Body Weight

Body Condition Score

- More like a torpedo
- Less like a hippo

Basic Physical Exam

- TPR
- Auscultation
- Others to follow

BC SCORE	BY VISUAL	BY TOUCH WITH FINGERTIPS	Approx. CM of BACK (at widest part)
1		Backbone, shoulders, ribs are sharply visible and defined. Capillary refill.	<8 inches +13 cm
2		Backbone, shoulders, hip and rump are noticeable and easily felt with fingertips pressure.	8-9-10 10-11.8
2.5		Backbone, shoulders, hip and rump are not noticeable with fingertip pressure.	
3		Backbone, shoulders, ribs and hip bones are not felt with fingertip pressure.	11-12 14-16
3.5		Backbone, shoulders, ribs and hip bones are not felt with fingertip pressure.	
4		Backbone, shoulders, ribs and hip bones are not felt with fingertip pressure.	13-14 16-18
5		Backbone, shoulders, ribs and hip bones cannot be felt with fingertip pressure.	>14-15.5 >19 cm

3

Restraint – Less is More



4

Pot Bellied Pig Sedation and Anesthesia

Maropitant: 1 mg/kg SQ or IM


Midazolam: 0.2-0.3 mg/kg

- IM vs Intranasal

Butorphanol: 0.2-0.3 mg/kg IM

Isoflurane Mask

- Induce @ 5% to effect (5 minutes)
- Maintain @ 2-3%



5

Maintaining Anesthesia



6


Domestic Pig Sedation and Anesthesia

Pot Bellied Pig Protocol?

Telazol/Ketamine/Xylazine

- Reconstitute 500 mg vial of Telazol with
 - 2.5 ml 100 mg/ml Xylazine
 - 2.5 ml 100 mg/ml Ketamine
- Administer at 1 ml/50-70 lb BW IM
- Maintain with isoflurane as needed


Supplemental O₂ is always good




7

Blood Collection

BLIND



OR WITH ULTRASOUND HELP



8

Skin Evaluation

- FYI:** Pigs will shed their entire coat 1-2/yearly, this is expected and a sign of a healthy pig. Pigs will always have some amount of sebaceous appearance to their skin. This can be minimized with appropriate care and prevention.
- Fresh vegetables or grazing:** If feasible, the pig's diet should be supplemented with vegetables daily or allowed to graze during summer months. Sugars present in fruit can lead to increased weight gain or inability to lose weight; these should be limited in the diet.
- Daily supplementation with vitamin/oil:** Pigs can be supplemented once daily with oral vitamin E capsules (~300 IU/capsule) formulated for humans. If a smaller concentration is desired, then vitamin E skin oil at a designated volume can be added to the diet. If the pig is in good condition or thin (BCS <5/9) supplementing 1 tsp of coconut oil daily can aid in skin health and weight gain.
- Bathing:** Bath pigs no more than 1-2/month. Use a non-scented, moisturizing, karyolytic shampoo such as Epi-soothe or Hydra Pearls (products available at our pharmacy). Adding cheerios to bath water may help engage and encourage pigs to enjoy bath time.
- Moisturizing:** All pigs would benefit from the application of lotions at least 3 times/week. Using a non-scented lotion such as Curel (non-scented) is preferable. Some may prefer to use oils to aid in skin care such as Skin-so-soft or coconut oil. The use of vegetable or cooking oil is discouraged. If the animal is heavily haired or has behavioral objections to lotion/oil application, diluting the product with water to decrease viscosity may ease application. Some may choose to dilute the product with water and spray it onto the pig being aware that many pigs will strongly object to this.
- Sunscreen:** All pigs, no matter their hide color can and will get sunburnt if outside for extended amounts of time. It is highly recommended to apply sunscreen daily to active, outdoor pigs. An SPF 30-50 either in spray or lotion form depending on the pig or owner preference.

9

Skin Evaluation

CRY, CRUSTY, SCALY SKIN

Common

Nutrition

- Vegetables
- Vitamin A
- Vitamin E

Bathe with Karyolytic Shampoo

Moisturizer

Sunscreen

PRASITES

Mites – Scabies

- Sarcoptes
- Owner may note that they itch as well

Lice


Ivermectin

- 300 ug/kg SQ in neck
- Repeat for a total of 3 times every 2 weeks


10

External Parasites

SARCOPTES





LICE



11

Cutaneous Squamous Cell Carcinoma

12

Ear Exam

- Regular Cleaning
- Any veterinary ear cleaner
- Cotton Balls
- Cotton Swabs

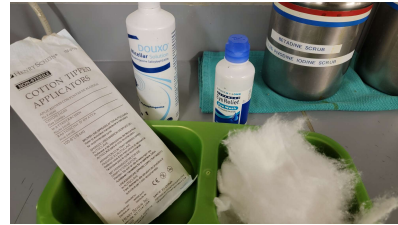
Did you Know?

- Idiopathic deafness can occur following general anesthesia in swine. Typically resolves in 1-3 weeks



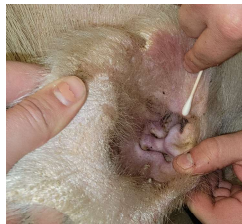
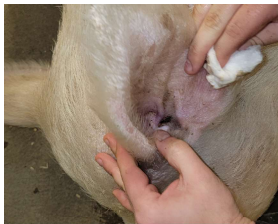
13

Ear Exam



14

Ear Exam



15

Eye Exam

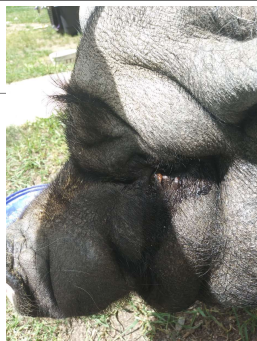
- Clean dirt and debris around eyes.
- Check for entropion



16

Entropion

- Congenital**
 - Less common
- Acquired**
 - Obesity is most common cause
 - Often difficult to control
 - Try to lose weight first
 - Surgical correction



17

Piggy Sue

6/14/2019 PRE-SURGERY

7/19/2019



18

Piggy Sue



19

Pig Hoof Trim

Overgrown Hoofs are Common!

Elongate at toe
Stay short at heal
Dewclaws



20

Hoof Evaluation



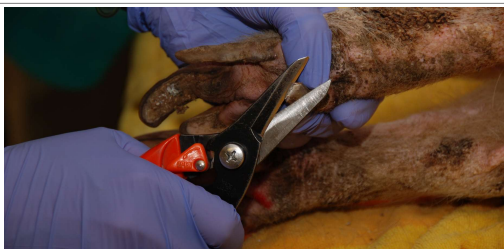
21

Hoof Trimming - Tools



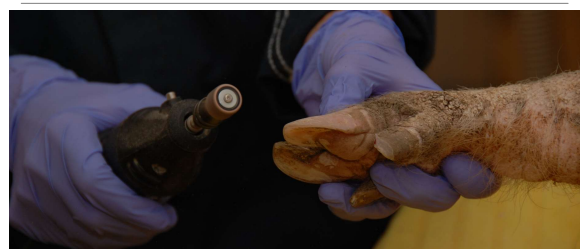
22

Hoof Trim - Examples



23

Hoof Trim



24

Hoof Trim

Start at the tip of the toe

Trim back to line parallel with Lamina and flat with the heel

- Use bright flashlight

Trim dorsal hoof wall working at the tip to get a straight dorsal hoof wall line.



25

Hoof Trim



26

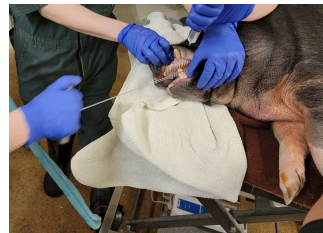
Dental Issues

Gingivitis
Dental Tartar
Tusk Length
Tooth Abscess



27

Dental Issues - Tusks



Tusk Trim

- Gigli or Obstetrical Wire
- Trim to a length above the gingiva that is approximately equal to the width at the base of the tooth.
- Syringe with water to help keep tooth cool and not damage the root.
- Dremel to round off edges

28

Vaccinations

Optional, most pet pigs are isolated from other pigs.

- Except if they are boarded
- Shelters and rescues

Environmental and Zoonotic Pathogens

- Erysipelas
- Leptospirosis
- Rabies (none labeled for swine)
- Tetanus (or CD-T)

Pre-partum Sow, add E. coli and Rotavirus

29

Medications

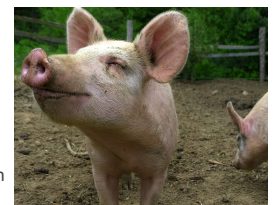
Some long term conditions

Chronic Arthritis

- Meloxicam 0.5 mg/kg PO q24h
- Gabapentin 5-7 mg/kg PO q12h

Behavioral Issues

- Fluoxetine (Prozac) 1-2 mg/kg PO q24h



30



31